

Product characteristic

ZQ series electric ball valve is a sphere around the center line of the body as a rotation to achieve an electric ball valve open and close. Sphere without support shaft, a sphere by two seats holding the "floating" state, it is mainly used for cutting on pipeline, distribution and change the flow direction of medium. With flow capacity coefficient of flow resistance is small, functional reliable performance, simple structure, convenient maintenance, long service life, etc. For a variety of fluid, such as gas liquid medium in the pipeline automatic opening and closing, so as to achieve program control systems and equipment or remote control, etc. Widely used in chemical, petroleum, natural gas, gas, metallurgy, power plant and other industries.

Working principle

ZQ Series electric ball valve divided into switch Type and modulate Type

ZQ series electric ball valve divided into 2-way type and 3-way type. The 2-way general type is divided into 2 pieces thread, 2 pieces flange, 3 pieces thread, 3-way divided into L type and T type.

ZQ series electric ball valve switch type, it use a 380 v/ 220 v/110 vac or 24 vdc as driving supply power, control of electric actuators are stem drive valve body ball 0° ~ 90° rotating ball valve opening and closing, realize the automatic control.

ZQ series electric modulating ball valve, it use a 380 v/ 220 v/110 vac as driving supply power, with 4 20 ma current signal or 0

10 v DC voltage signal to control signal, control electric actuators to spin valve rod drives the body ball to valve movement

required position, realize the automatic control.

Installation and using

1. The electric ball valve installations unprincipled requirements, but electric actuators in level state, the electric box cover is in the water flat or vertical status for the recommended installation form, it is good for soothing, debugging, maintenance and manual operation.
2. When installation should guarantee the space required for worker.
3. Connected to the flange body bolts shall be not less than 8.8 level on the richter scale are unlikely.
4. When the need to remove, should be the manual handwheel number of turns, the valve slightly open.
5. Installation, disassembly, commissioning shall not damage the sealing surface, cover tightly seal electrical cover should be tightened, in case of rain or moisture to enter.
6. Windows may not collide with hard objects.
7. When the valve is not often use, should be regular inspection and maintenance and operation, suggest that at least once a month.

Order attention

You should indicate the type specification when you order it, provide a detailed technical parameters, such as: operating mode (switch type or modulate type?) Voltage, medium, medium temperature, body material, max working pressure, orifice size, connection mode and size, environment temperature, etc.

ZQ series electric ball valve main technology parameter

1. Power voltage: AC220V / AC110V AC380V / 440v DC24V DC12VDC110V DC220V
2. Hole: 2M18
3. Medium temperature: - 20 C to 200°C
4. Fluid medium: water, oil, air and some corrosive liquid
5. Mode of action: switch type electric actuator drive valve body sphere to 0 C ~ 90° ± 10°
modulate type electric actuator body sphere rotates to the valve movement required position
6. Working pressure: standard 0 ~ 2.5 Mpa Optional 0 ~ 4.0 Mpa
7. Body material: standard SS304 (CF8) special made SS316 (CF8M)
8. DN size: DN15 ~ DN200
9. Connection type: thread connection 1/4" , 3/8" , 1/2" , 3/4" , 1" , 1 1/4" 1 1/2" 2" , 3" , 4" ,
standard DIN259/2999 Flange connection 15 F, 20F, 25F, 32 F, 40F, 50 F 65 F 80F
100F 125F 150F 200F standard GB9113

Product overview 3-way electric high temperature ball valve seat, seal is made of high temperature special PPL replace of TEFLON, use of special processing technology, Has better high temperature resistance, thermal stability, corrosion resistance and have self lubricating. Two-way electric high temperature ball valve life 3 ~ 5 times that of conventional 2-ways ball valve. Medium: water, steam, thermal oil, acids, etc.
 Medium temperature: - 20 C - 200 X : .

Product characteristic

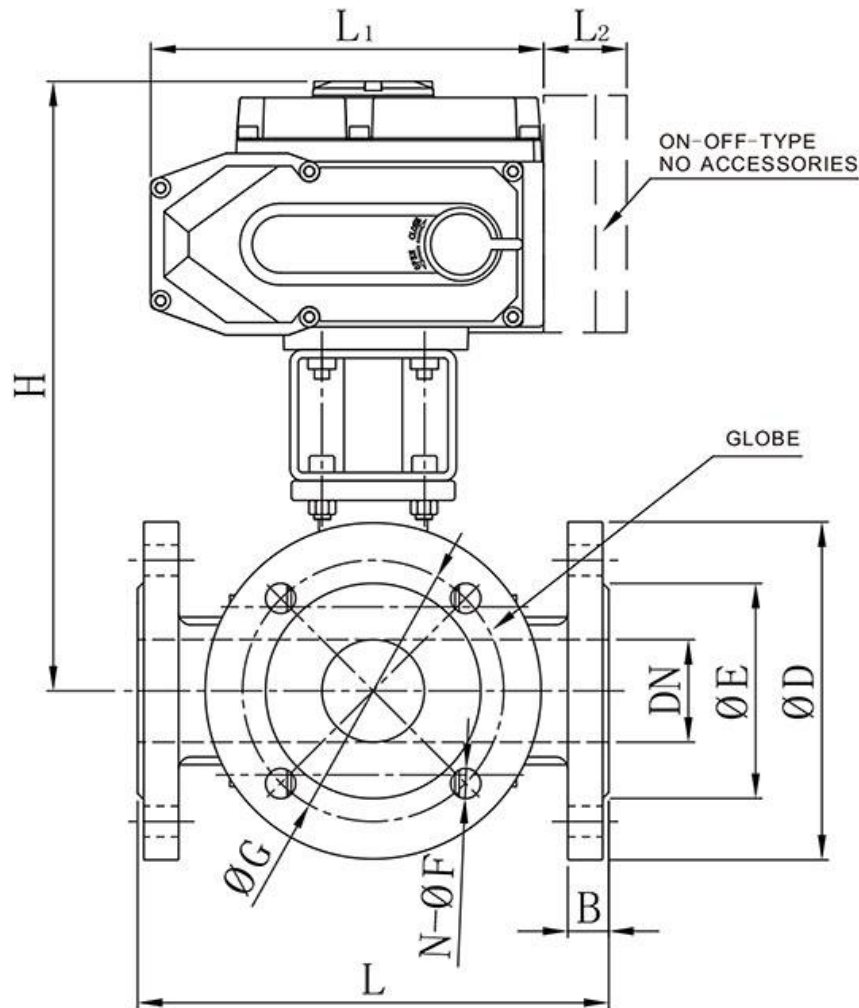
1. 3-way electric flange ball valve have two and four seal structure, the valve core hole have L type and T type two kinds of structure forms, USES the Angle control valve core, changing the valve core hole with apertures connection state, Can be realized for three different combination control pipeline.
2. Applicable to many medium and can realize 2-way flow.
3. The flow capacity is big, the 3-way ball valve can control gas, liquid and steam, more suitable for the high viscosity control Granular flow, fiber. Applies to a strict sealing occasions. Ball valve are all valve class One of least resistance of fluid.
4. Two seat sealing 3-way ball valve has a compact structure, beautiful shape, sealed performance is good, it can be real switch to the flow direction of medium pipeline, also can make the perpendicular two channels connected or shut down.
5. The four seat sealing 3-way ball valve has a compact structure, beautiful shape, sealed performance is good, not only can implementation of the media in the pipeline flow switch, but also can control the medium inside the pipeline rivers or flexible shunt.
6. T type valve core hole can make three orthogonal pipe connected to each other or switch and shunt or confluence role; L-type pipeline into two orthogonal channel. Make another channel cut off and the flow direction of medium change role.



Valve Selection List

DN (mm)	Orifice mm	Operating Pressure Differential (bar)		Fluids Temp ℃	Actuator		L × W × H	Model Code 220VAC 50/60HZ
		CV Facto	Steam high temp, gas and High temp liquid		Voltage AC	Torque N · M		
25	12	0	2.5	-20-200	AC220V	50	180×191	QD85LA20P32F25
								QD85LA20P32F25K
								QD85TAA20P32F25
								QD85TAA20P32F25K
								QD85TBA20P32F25
								QD85TBA20P32F25K
								QD85TCA20P32F25
								QD85TCA20P32F25K
								QD85TDA20P32F25
								QD85TDA20P32F25K
40	29	0	2.5	-20-200	AC220V	100	220×216	QD85LA20P32F40
								QD85LA20P32F40K
								QD85TAA20P32F40
								QD85TAA20P32F40K
								QD85TBA20P32F40
								QD85TBA20P32F40K
								QD85TCA20P32F40
								QD85TCA20P32F40K
								QD85TDA20P32F40
								QD85TDA20P32F40K
50	48	0	2.5	-20-200	AC220V	300	240 × 256	QD85LA20P32F50
								QD85LA20P32F50K
								QD85TAA20P32F50
								QD85TAA20P32F50K
								QD85TBA20P32F50
								QD85TBA20P32F50K
								QD85TCA20P32F50
								QD85TCA20P32F50K
								QD85TDA20P32F50
								QD85TDA20P32F50K

Dimensions



DN(mm)	SIZE (mm)									Mode code AC220V
	L	D	G	E	B	H	N-F	L ₁	L ₂	
25	180	115	85	65	14	254	4-14	160	--	DQ-008
									40	DQ-008K
40	220	150	110	85	16	280	4-18	189	--	DQ-015
									40	DQ-015K
50	240	160	125	100	16	330	4-18	268	--	DQ-030
									40	DQ-030K